



## 62 Pendennis Avenue, South Elmsall, Pontefract, WF9 2PJ

This beautiful 3 bed dormer bungalow is a must see, sitting on a generous corner plot with views over fields, you do not want to miss this.

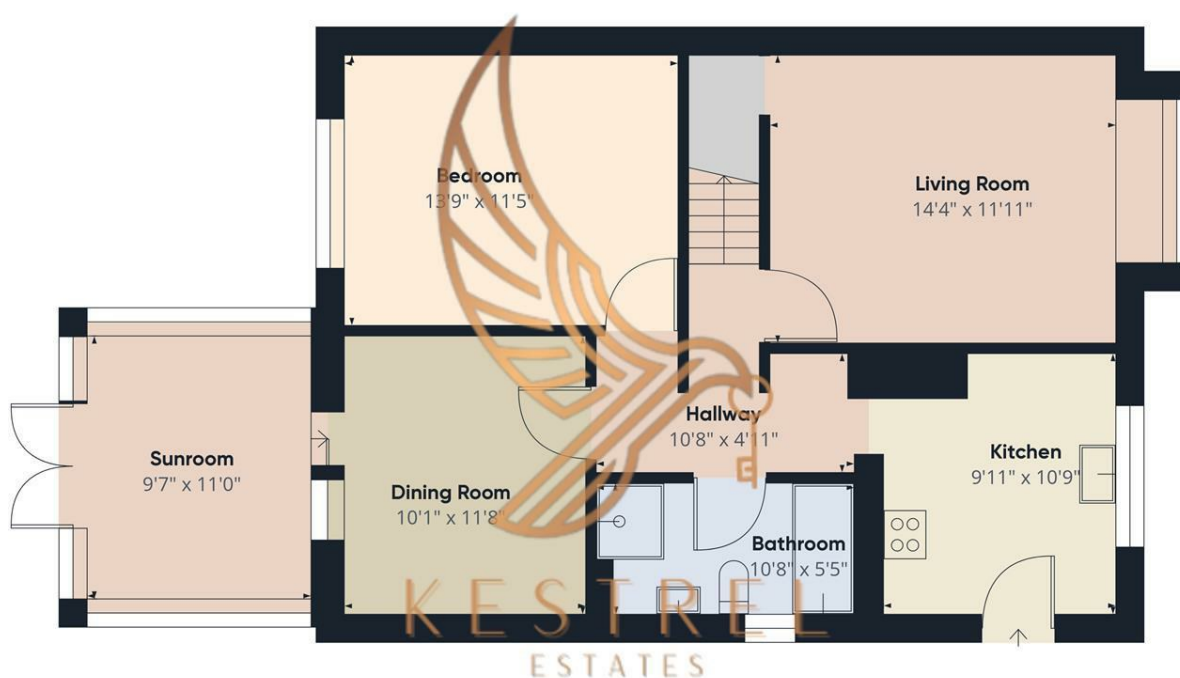
Downstairs the property briefly comprises of a fitted kitchen, separate lounge, dining room, conservatory/sun room, downstairs bathroom and a bedroom. The 2 further bedrooms, 1 with en-suite are located upstairs.

Outside there is off road parking, garage and a lovely generous rear garden with views over the fields.

This spacious bungalow will appeal to families and anyone wanting to downsize. With its great location close to rail links, schools and amenities and NO CHAIN, you better not hang about

- 3 Bed Dormer Bungalow
- Master Bedroom with En Suite
- Living Room, Dining Room & Sun Room
- Garage & Off Street Parking
- Corner Plot with Field Views
- NO CHAIN
- Great Location

**£250,000**



Approximate total area<sup>®</sup>  
848.68 ft<sup>2</sup>

(1) Excluding balconies and terraces

While every attempt has been made to ensure accuracy, all measurements are approximate, not to scale. This floor plan is for illustrative purposes only.

GIRAFFE360

Floor 0

